

FLOOR CONSTRUCTION

General Information

Bally can provide design recommendations for many kinds of floor construction. The Bally floor panel on a properly prepared base is an excellent choice for most installations. The drawings on the following pages also show built-in insulated floors, which are recommended for certain applications.

Because requirements vary widely with individual site conditions and local construction regulations, review and approval of all such plans must be the responsibility of an engineer familiar with the circumstances of the individual installation.

Insulation Thickness for Built-in Floors

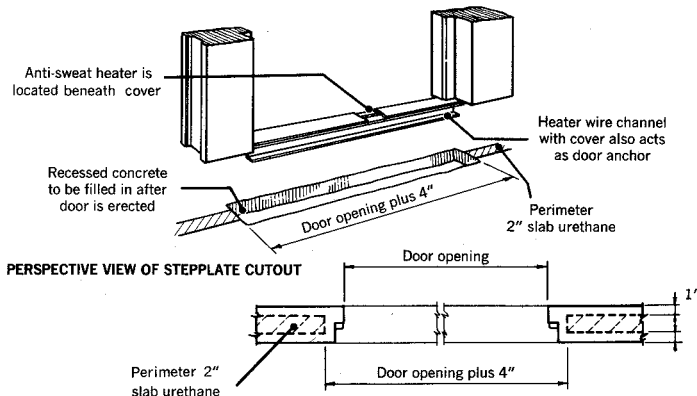
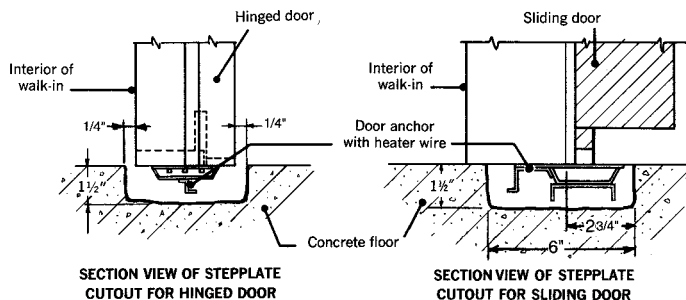
When temperature within the walk-in or refrigerated building are 30°F (-1.1°C) or above, built-in insulated floors should incorporate two layers of 1"-thick sheet urethane. When temperatures are below 30°F (1.1°C), we recommend two layers of 2"-thick sheet urethane. In either case, joints must be staggered when the urethane is installed.

Maximum Loads on Bally Floor Panels

Bally floor panels are designed to withstand uniformly distributed stationary floor loads up to 600 psf (700 psf when diamond-tread overlay is used). Whenever loads exceed these weights, a minimum of four inches of reinforced concrete must be poured on top of the floor panels. Whenever carts are used, Bally recommends the use of diamond-tread overlays or thick-set quarry tile. Also available for higher weight requirements are reinforced floors with internal I-beam support and 1/4" overlay.

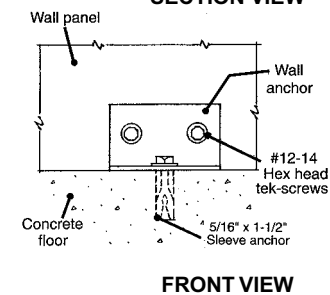
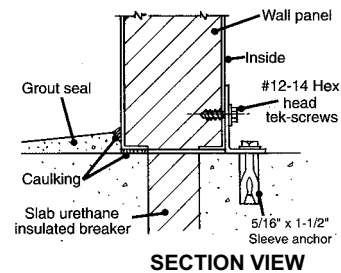
Door Installation Details for Built-in Floors

(Heated stepplate shown below is available on coolers and required on freezers.)

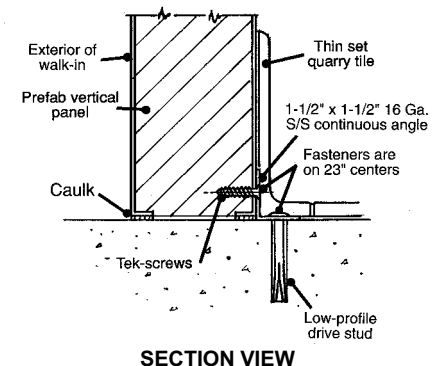
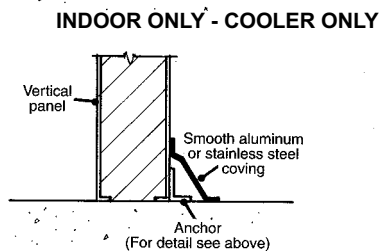
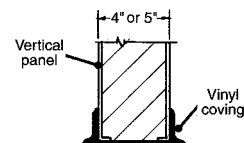


DETAIL OF PERIMETER INSULATION AT DOOR OPENINGS

Vertical Panel Anchoring



N.S.F.



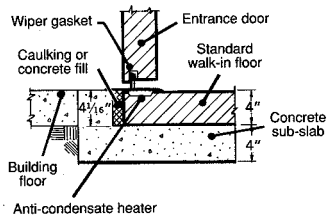
FLOOR CONSTRUCTION – CONTINUED

WALK-IN FLOORS

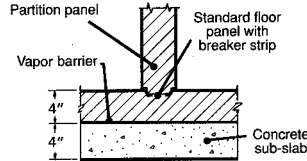
Because requirements vary widely with individual site conditions and local construction regulations, design, review and approval of all such plans must be the responsibility of an engineer familiar with the circumstances of the individual installation.

Additional underfloor heating and venting may be required to prevent frost heaving of the floor, depending on size, temperature of application and location. See page three, this section. (Dimension shown are for 4" – thick panels; if 5" or 6" panels are used, adapt drawings accordingly by adding 1" to inside of wall thickness.)

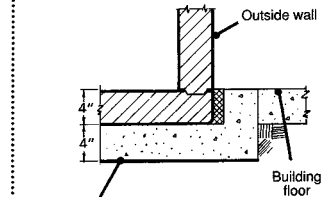
Bally floor panels in depressed pad (indoors only)



SECTION VIEW THRU DOOR

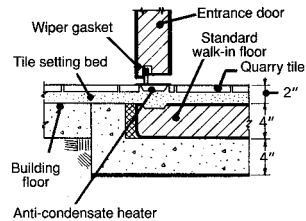


SECTION THRU PARTITION

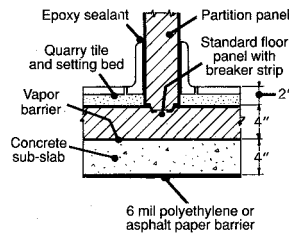


SECTION THRU OUTSIDE WALL

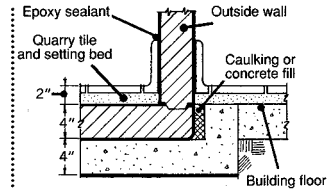
Bally floor panels in depressed pad with quarry tile (indoors only)



SECTION VIEW THRU DOOR

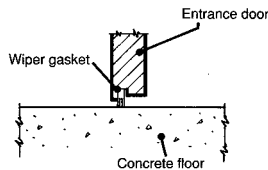


SECTION THRU PARTITION

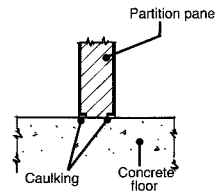


SECTION THRU OUTSIDE WALL

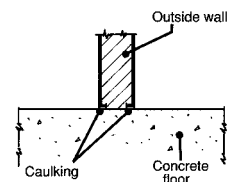
Non-illustrated concrete floor - coolers only (indoors, grade floor only)



SECTION VIEW THRU DOOR

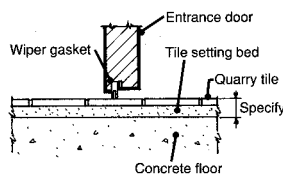


SECTION THRU PARTITION

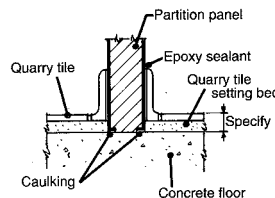


SECTION THRU OUTSIDE WALL

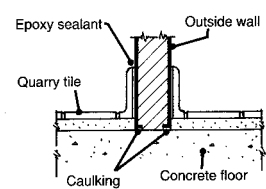
Thin-set quarry tile on non-insulated concrete floor - coolers only (indoors, grade floor only)



SECTION VIEW THRU DOOR

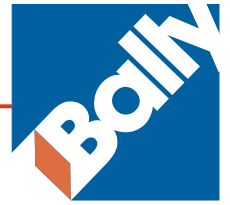


SECTION THRU PARTITION



SECTION THRU OUTSIDE WALL

3 FLOORS



FLOOR CONSTRUCTION – CONTINUED WALK-IN FLOORS – CONTINUED



% & ! " # \$ " ' "

